

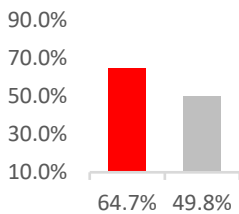
Rankin School District #98 - Data Dashboard

Source **ISBE - Illinois Report Card** <https://www.illinoisreportcard.com/>

Summative Designations	Year	Teacher Retention Rate%	Student Attend. Rate %
Commendable	2018	District 90.2%	District 94.4%
Exemplary	2019	State 90.2%	State 91.2%
Exemplary	2020		
Not calculated (COVID-19)	2021		
Commendable	2022		
Exemplary	2023		

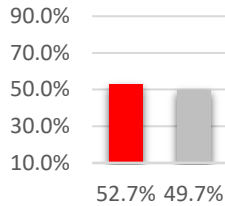
Growth % - IAR - Math

District 64.7%
State 49.8%



Growth % - IAR - ELA

District 52.7%
State 49.7%



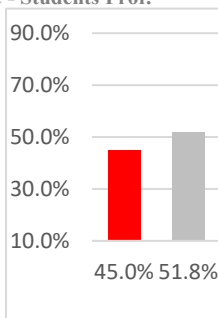
Students to Teacher Ratio

District 14:1
State 17:1



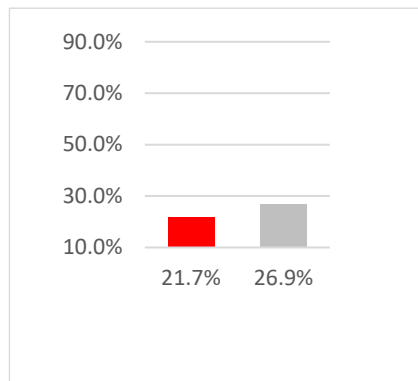
Illinois Science Assessment

District - Students Prof. 45.0%
State - Students Prof. 51.8%



IAR - Math Proficiency

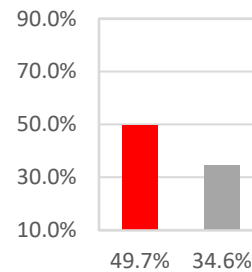
District - Students Prof. 21.7%
State - Students Prof. 26.9%



IAR - ELA Proficiency

District - Students Prof. 21.7%
State - Students Prof. 26.9%

District - Students Prof. 49.7%
State - Students Prof. 34.6%



Nov. 8, 2023